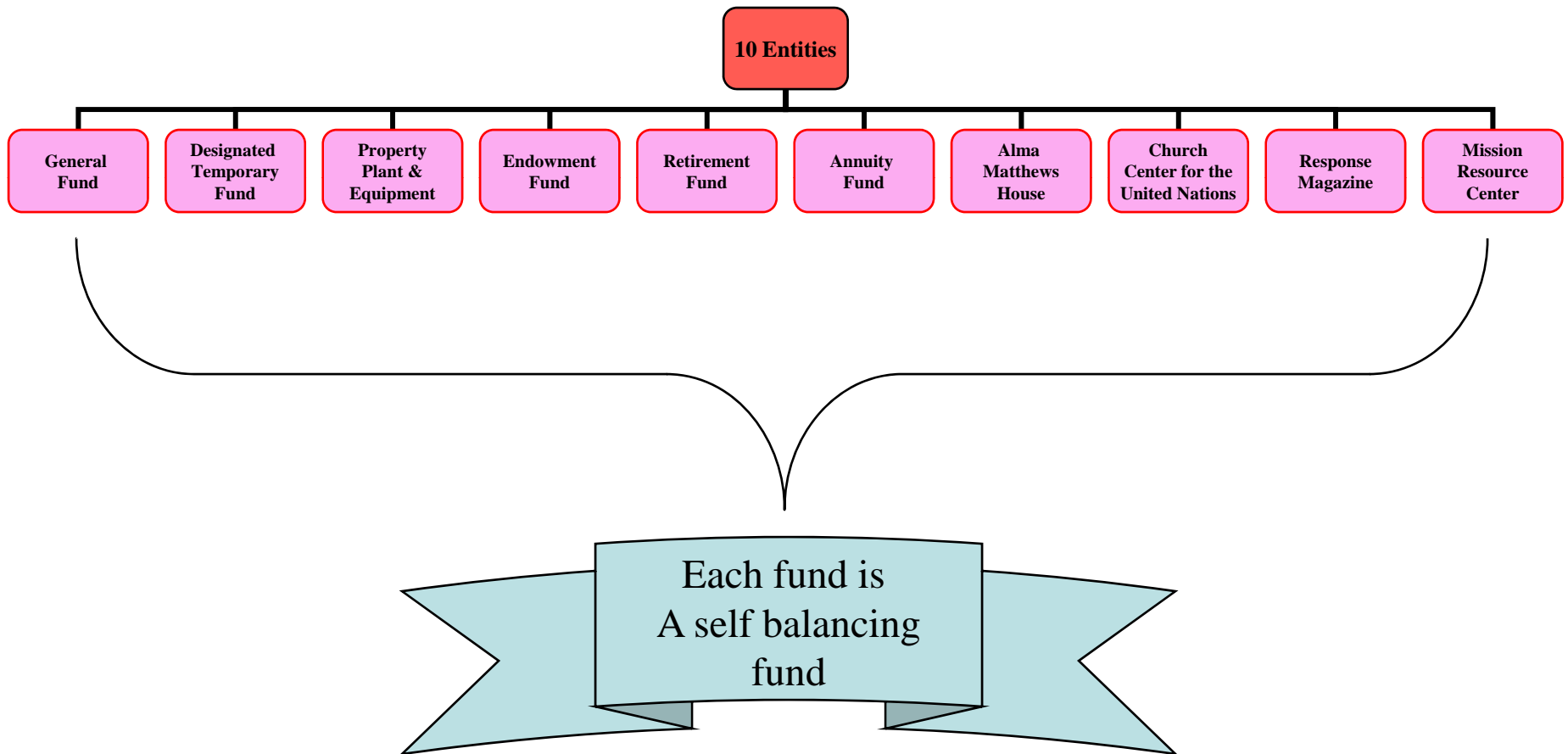


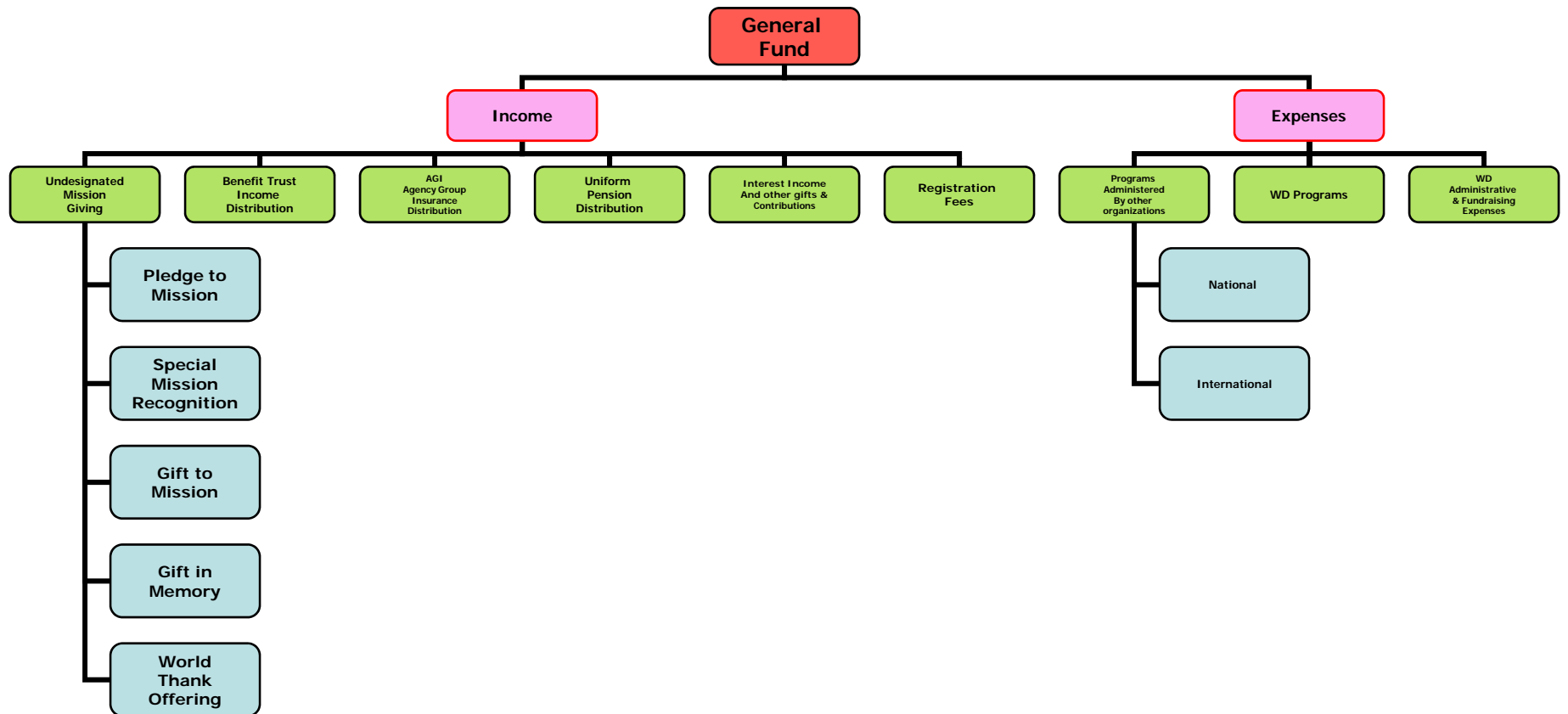
10 Entities Report

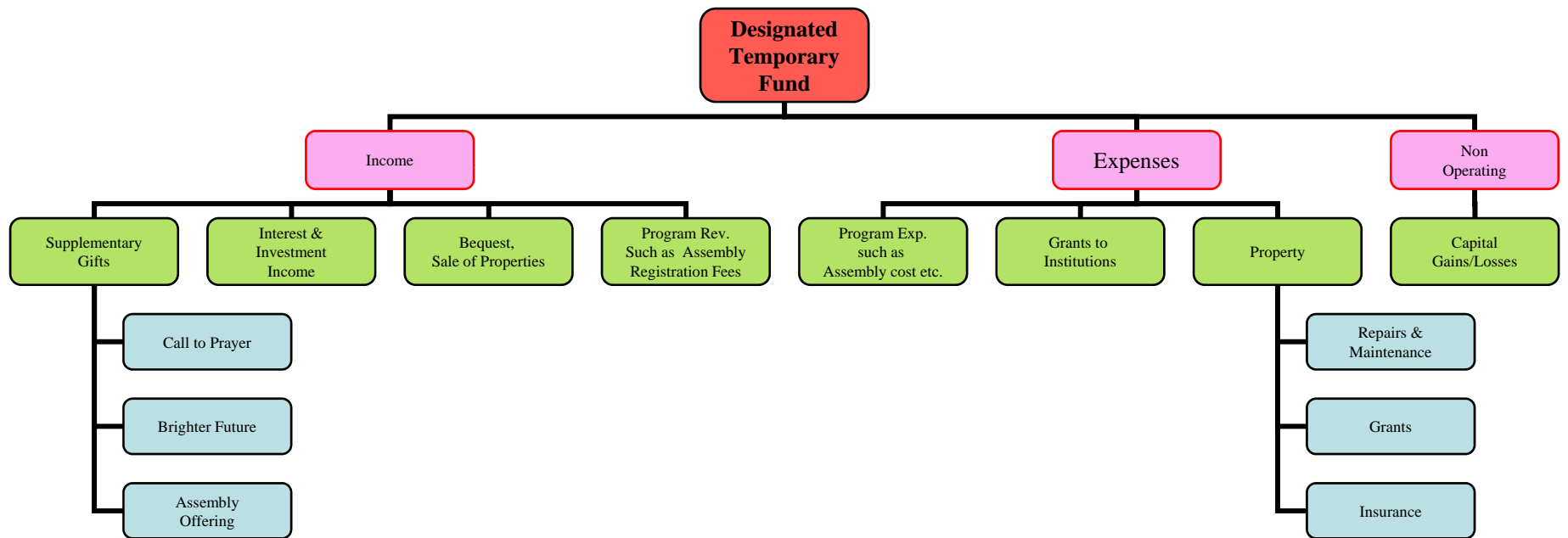


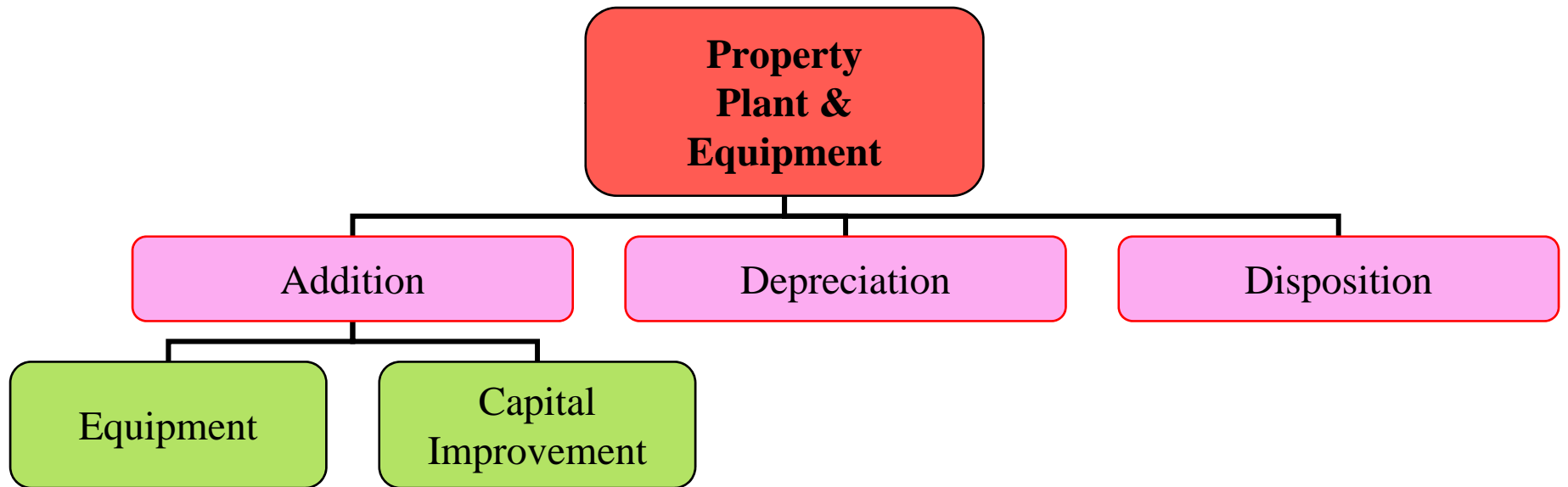
Women's Division

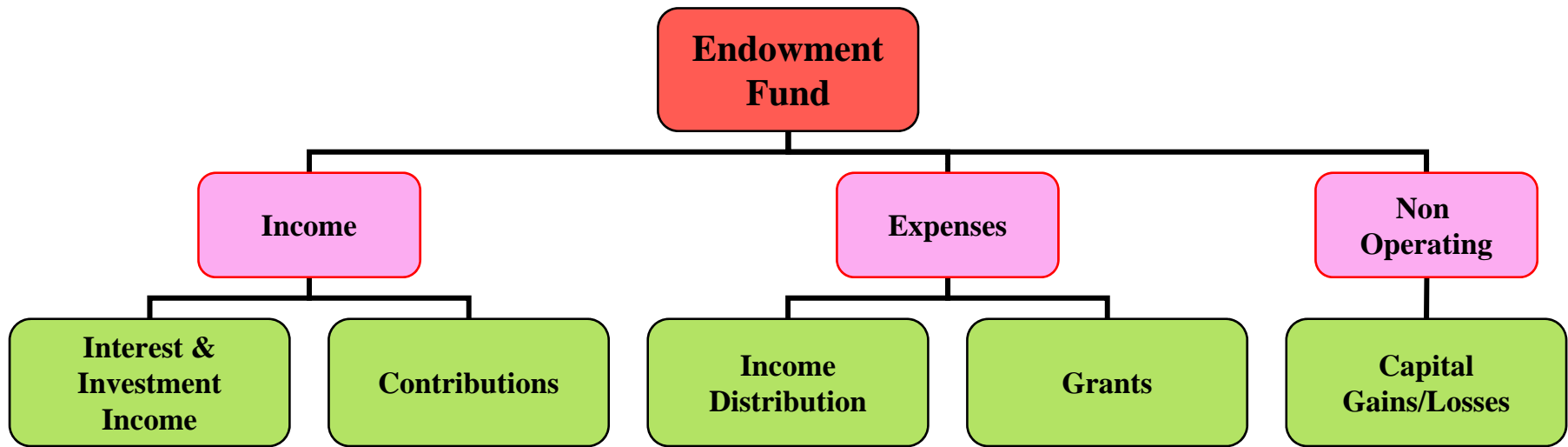
Section of Finance – Fall Board Meeting

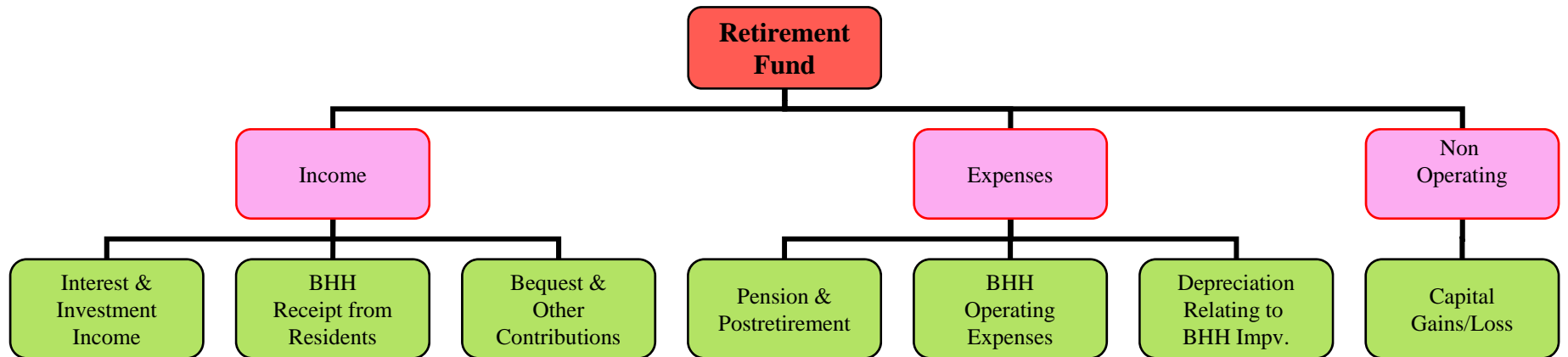


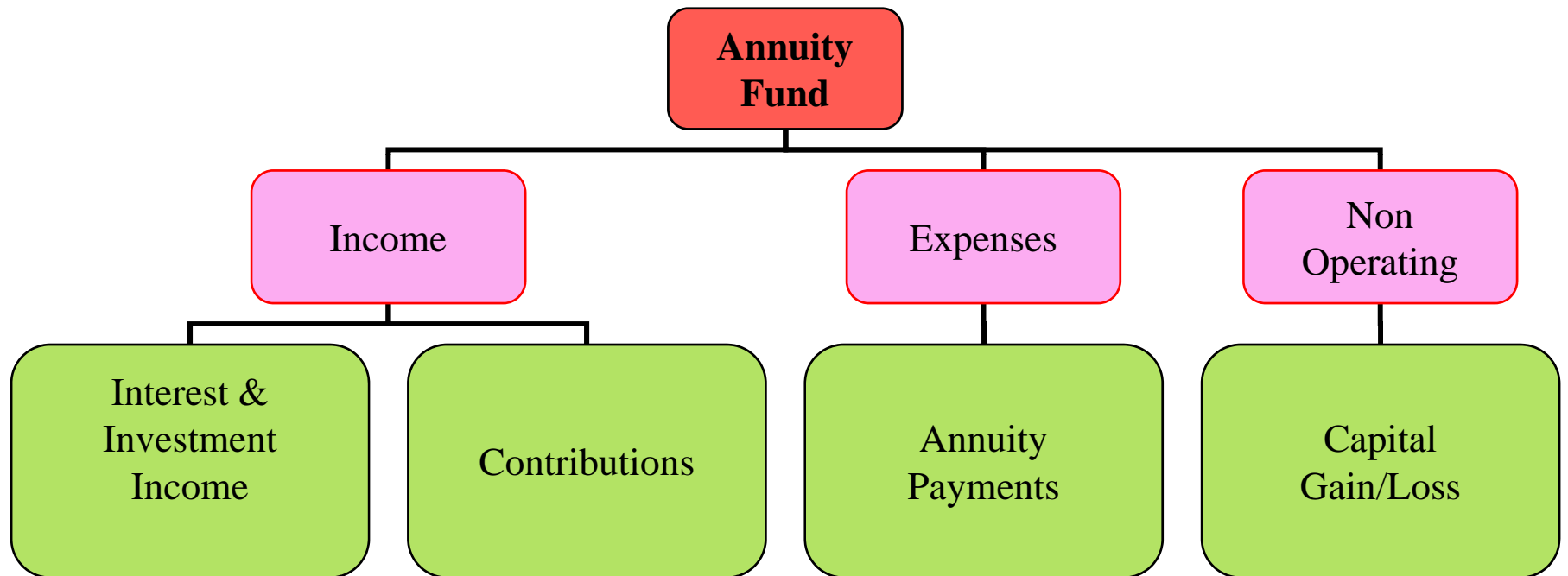


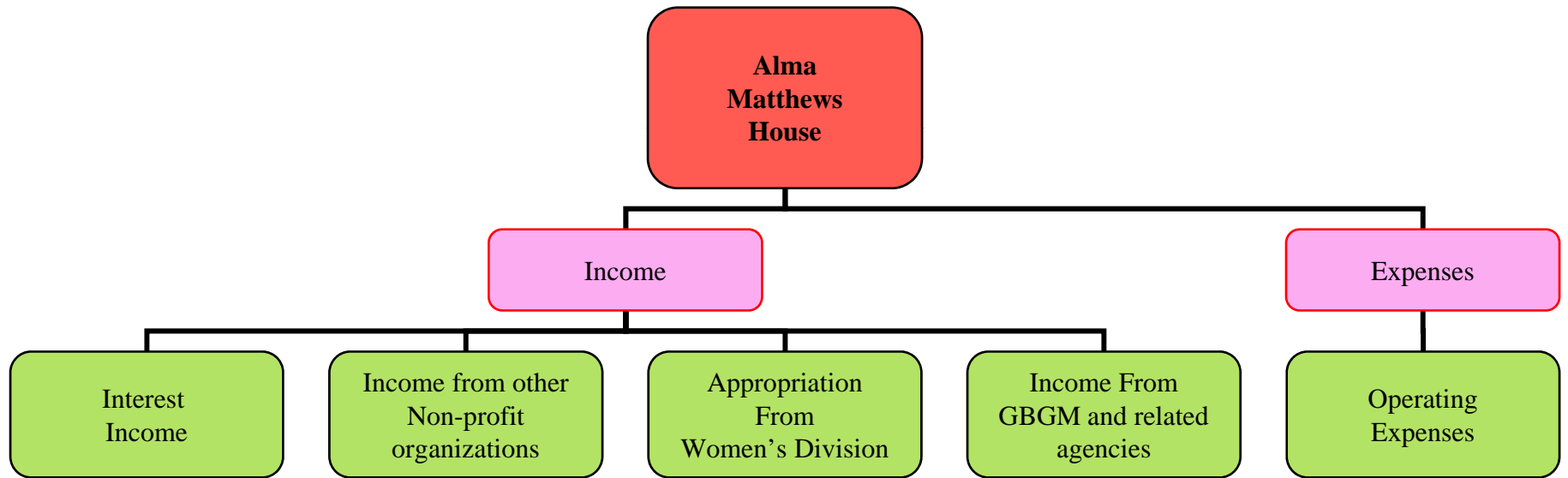


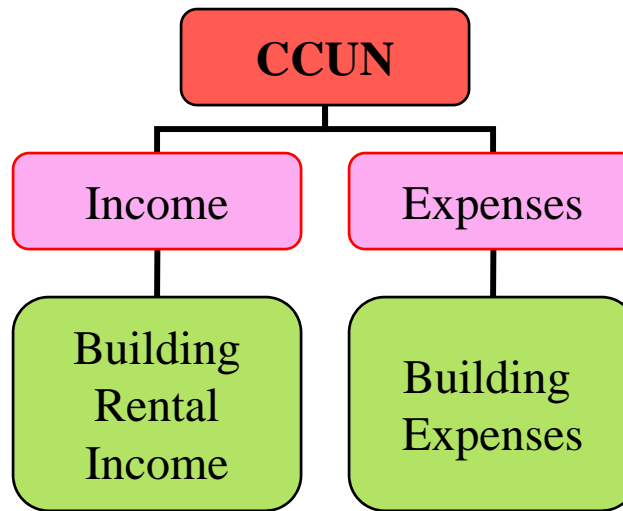


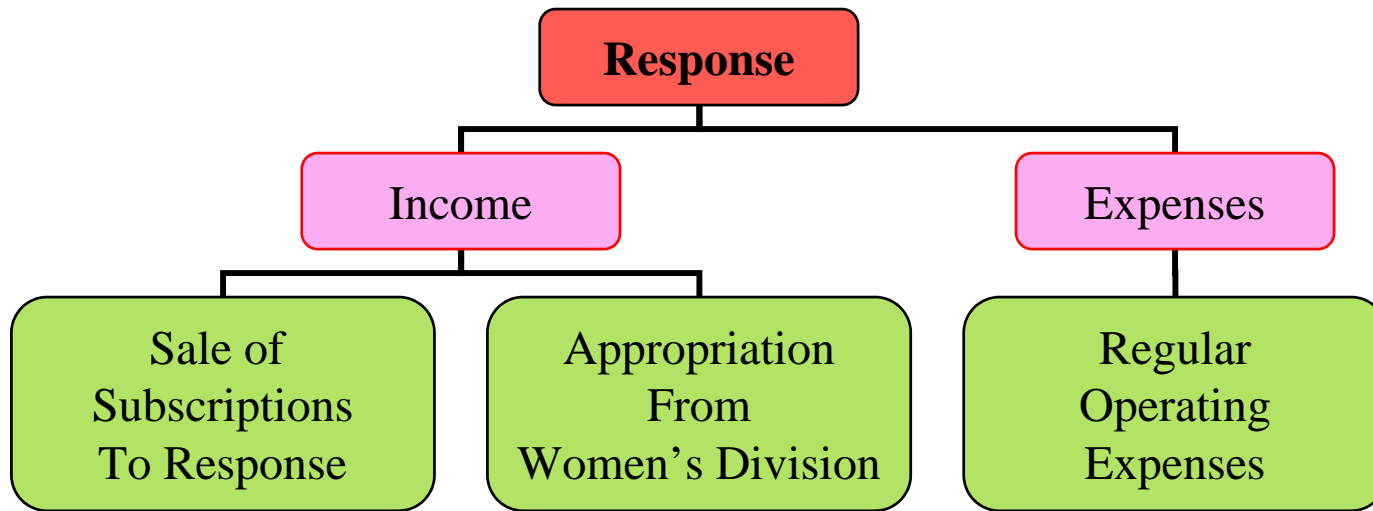


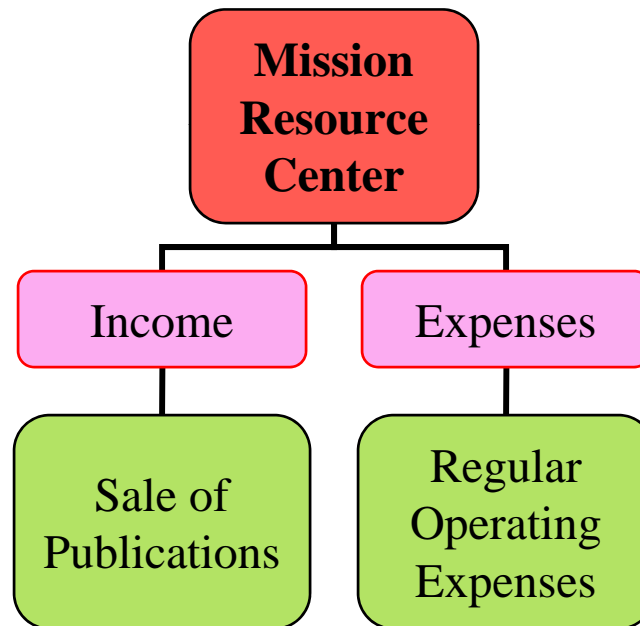














Women's Division

Section of Finance – Fall Board Meeting

	General Fund	Designated Temporary Fund	Property & Equipment Fund	Endowment Fund	Retirement Benefit Fund	Annuity Fund	Alma Mathews Church Center for the U.N. Response	MRC / Service Center	August 31, 2008		
Assets											
Cash and cash equivalents	1,357,412	547,694		489,153	1,889,936	6,142	68,349	1,609,869	32,698	178,681	6,179,934
Receivables:											
Due from Conferences											0
Mortgage receivable		73,108									73,108
Investment accrued income		22,754		137,959	129,215	692					290,620
Staff and other Mortgages					31,386						31,386
Due from units of GBGM					500				628		1,128
Other	313,402	66,358		2,037	161,640		535	481,781	269	361,877	1,387,899
Inventories and other assets		172,845			447,093					1,033,177	1,653,115
Investments BY Fund Managers		4,913,665		43,132,466	40,700,161	557,004					89,303,296
Investments BY BHH Fund Managers					515,848						515,848
Investment in debt securities of the United Methodist Development Fund		5,500									5,500
Land, buildings and equipment, net			279,775		4,845,694			2,087,493		26,640	7,239,602
Properties at nominal amount	1							1			2
Investment held in Perpetual Trusts by Others				817,538							817,538
Total Assets	1,670,815	5,801,924	279,775	44,579,153	48,721,473	563,838	68,884	4,179,144	33,595	1,600,375	107,498,976
Liabilities and Net Assets											
Liabilities:											
Accounts payable and accrued expenses	221,239	338,585		11,267	168,810		1,044	303,922	5,205	808,865	1,858,937
Grants Payable	132,539	0									132,539
Annuities payable						423,457					423,457
Due to units of GBGM	2,997,321	137,521									3,134,842
Deferred subscription revenue	100						0	19,520	205,026		224,646
Accrued Post-retirement Benefit/Pension benefit cost					38,911,806						38,911,806
Assets held for others		1,071,931		2,123,882	250,129						3,445,942
Total Liabilities	(1,034,267)	(6,293,949)	0	10,189,249	44,153,428	423,457	(7,547)	(366,564)	(8,121)	1,100,567	48,156,253
Net Assets:											
Unrestricted:											
Undesignated	2,705,082	3,207,542	279,775								6,192,399
Board designated for programs		2,660,898				140,381	76,431	4,545,708	41,716	499,808	7,964,942
Designated for missionaries and deaconesses' retirement					3,809,179						3,809,179
Designated funds functioning as endowment				372,557							372,557
Total unrestricted	2,705,082	5,868,440	279,775	372,557	3,809,179	140,381	76,431	4,545,708	41,716	499,808	18,339,077
Temporarily restricted		6,227,433		19,330,090	184,934						25,742,457
Permanently restricted				14,687,257	573,932						15,261,189
Total Net Assets	2,705,082	12,095,873	279,775	34,389,904	4,568,045	140,381	76,431	4,545,708	41,716	499,808	59,342,723
Total Liabilities and Net Assets	1,670,815	5,801,924	279,775	44,579,153	48,721,473	563,838	68,884	4,179,144	33,595	1,600,375	107,498,976



	August 31, 2008	August 31, 2007	December 31, 2007
Assets			
Cash and cash equivalents	\$ 6,179,934	\$ 4,815,242	\$ 6,011,610
Receivables:			
Due from Conferences			4,926,870
Mortgage receivable	73,108	97,210	87,400
Investment accrued income	290,620	343,725	315,131
Staff and other Mortgages	31,386	35,114	35,114
Due from units of GBGM	1,128	0	1,500
Other	1,387,899	1,006,257	1,027,015
Inventories and other assets	1,653,115	1,107,103	1,145,125
Investments BY Fund Managers	89,303,296	102,018,574	100,438,613
Investments BY BHH Fund Managers	515,848	498,663	676,572
Investment in debt securities of the United Methodist Development Fund	5,500	5,500	5,500
Land, buildings and equipment, net	7,239,602	7,247,164	6,904,379
Properties at nominal amount	2	2	2
Investment held in Perpetual Trusts by Others	817,538	791,298	817,539
Total Assets	\$ 107,498,976	\$ 117,965,852	\$ 122,392,370

**Liabilities and Net Assets****Liabilities:**

Accounts payable and accrued expenses	\$ 1,883,021	\$ 2,048,279	\$ 3,083,088
Grants Payable	132,539	142,663	142,564
Annuities payable	423,457	500,874	499,138
Due to units of GBGM	3,134,842	3,219,355	752,444
Deferred subscription revenue	224,646	860,962	224,772
Accrued Post-retirement Benefit/Pension benefit cost	38,911,806	35,312,939	38,911,806
Assets held for others	3,445,942	3,648,118	4,027,047
Total Liabilities	48,156,253	45,733,190	47,640,859

Net Assets:

Unrestricted:

Undesignated	6,192,399	(1,337,702)	10,115,651
Board designated for programs	7,964,942	(388,423)	7,392,121
Designated for missionaries and deaconesses' retirement	3,809,179	15,312,183	11,691,938
Designated funds functioning as endowment	372,557	17,197,049	410,801
Total unrestricted	18,339,077	30,783,107	29,610,511
Temporarily restricted	25,742,457	26,616,523	29,825,033
Permanently restricted	15,261,189	14,833,032	15,315,967
Total Net Assets	59,342,723	72,232,662	74,751,511

Total Liabilities and Net Assets	\$ 107,498,976	\$ 117,965,852	\$ 122,392,370
---	-----------------------	-----------------------	-----------------------



Women's Division

Section of Finance – Fall Board Meeting

	General Fund	Designated Temporary Fund	Plant & equipment	Endowment Fund	Retirement Benefit Fund	Annuity Fund	Alma Mathews Fund	Church Center for the U.N. Response	MRC Service Center	Elimination	Aug 31, 2008 Total	
Operating revenues:												
From United Methodist Women :												
General appropriations	5,226,740										5,226,740	
Special Mission recognition	398,798										398,798	
Gift to Mission	280,918										280,918	
Gift in Memory	163,078										163,078	
World Thank Offering	295,162										295,162	
Other Mission Giving												
Supplementary Gifts		121,892									121,892	
Call to Prayer		723,077									723,077	
Assembly Offering		2,935									2,935	
Interest income from short term deposits & loans	32,619	13,096		6,983	983	18	2,465	25,896	1,197		83,257	
Investment income, net of fees	-	80,910		592,370	473,424	6,943					1,153,647	
Benefit Trust Income	112,887										112,887	
AGI Surplus Distribution	151,095										151,095	
Uniform Staff Pension Fund	219,801						13,887	1,461			235,149	
Bequests, gifts & contributions	349,436	80,055				10,000					439,491	
Publication, rental income & other program revenues	316,825				271,831		236,148	1,672,798	421,775	1,721,461	4,072,337	
Brooks Howell Home Receipts from Residents					1,710,025					(568,501)	1,710,025	
Total	7,547,359	1,021,965	-	599,353	2,456,263	16,961	252,500	1,700,155	422,972	1,721,461	(568,501)	15,170,488
Net Assets released from restrictions												-
Total operating revenues	7,547,359	1,021,965	-	599,353	2,456,263	16,961	252,500	1,700,155	422,972	1,721,461	(568,501)	15,170,488
Operating Expenses:												
Program Services:												-
Programs administered by other organizations:												-
Grants to GBGM	3,371,569											3,371,569
Grants to other organizations	547,215	433,358		42,490								1,023,063
Grants to UMCOR												-
	3,918,784	433,358		42,490								4,394,632
Programs administered by the Division:												-
Mission programs	4,759,196	153,769				433	347,382			(568,501)		4,692,279
Mission personnel:												-
Pension & Postretirement					2,709,867							2,709,867
Brooks Howell Home Expenses					1,919,204							1,919,204
Property, repairs & maintenance		86,746			119,281							206,027
Service Center, CCUN & Others								1,313,670	381,256	1,221,653		2,916,579
Scarritt-Bennett Center - grants	20,833											20,833
Total Program Expenses	8,698,813	673,873	-	42,490	4,748,352	433	347,382	1,313,670	381,256	1,221,653	(568,501)	16,859,421
Supporting services-management & general	2,377,715											2,377,715
Fundraising	54,665											54,665
Total operating expenses	11,131,193	673,873	-	42,490	4,748,352	433	347,382	1,313,670	381,256	1,221,653	(568,501)	19,291,801
(Decrease)/Increase in net assets from operations	(3,583,834)	348,092	-	556,863	(2,292,089)	16,528	(94,882)	386,485	41,716	499,808	-	(4,121,313)
Nonoperating activities:												
Net (depreciation) appreciation in fair value of investments		(392,738)		(5,314,622)	(5,590,670)	(225)						(11,298,255)
Net App/Dep in FV of Trusts held by others				5,147								5,147
Gain on sale of properties		5,558										5,558
Endowment Contribution				75								75
Total Nonoperating activities												-
(Decrease)/Increase in net assets for the year	(3,583,834)	(39,088)	-	(4,752,537)	(7,882,759)	16,303	(94,882)	386,485	41,716	499,808	-	(15,408,788)
Intrafund transfer	84,000						(84,000)					-
Total Other Changes	84,000	-	-	-	-	-	(84,000)	-	-	-	-	-
(Decrease)/Increase in net assets during the year	(3,667,834)	(39,088)	-	(4,752,537)	(7,882,759)	16,303	(10,882)	386,485	41,716	499,808	-	(15,408,788)
Net assets - Beginning of year	6,372,916	12,134,961	279,775	39,142,440	12,450,804	124,078	87,313	4,159,223	-	-	-	74,751,510
Net assets - End of year	2,705,082	12,095,873	279,775	34,389,903	4,568,045	140,381	76,431	4,545,708	41,716	499,808	-	59,342,722



	Unrestricted	Temporarily Restricted	Permanently restricted	August 31, 2008	August 31, 2007	December 31, 2007
Operating revenues:						
From United Methodist Women :						
General appropriations	\$ 5,226,740			\$ 5,226,740	\$ 5,116,017	\$ 12,819,739
Special Mission recognition	398,798			398,798	397,051	893,546
Gift to Mission	280,918			280,918	195,793	619,866
Gift in Memory	163,078			163,078	156,457	415,495
World Thank Offering	295,162			295,162	297,249	1,617,361
Other Mission Giving				-	-	4,895
Supplementary Gifts	94,733	27,159		121,892	110,566	319,083
Call to Prayer		723,077		723,077	715,482	986,539
Assembly Offering		2,935		2,935	4,798	8,929
Interest income from short term deposits & loans	83,257			83,257	14,839	135,032
Investment income, net of fees	567,692	585,955		1,153,647	1,658,362	1,935,254
Benefit Trust Income	112,887			112,887	148,668	182,506
AGI Surplus Distribution	151,095			151,095	164,942	164,942
Uniform Staff Pension Fund	235,149			235,149	218,267	333,945
Bequests, gifts & contributions	359,436	80,055		439,491	109,221	1,393,420
Publication, rental income & other program revenues	4,072,337			4,072,337	2,992,217	4,724,357
Brooks Howell Home Receipts from Residents	1,710,025			1,710,025	1,776,621	2,729,707
Net Assets released from restrictions	238,777	(238,777)				
Total operating revenues	13,990,084	1,180,404		15,170,488	14,076,550	29,284,616



Operating Expenses:

Program Services:

Programs administered by other organizations:

Grants to GBGM	3,371,569		3,371,569	3,428,839	5,888,079
Grants to other organizations	1,023,063		1,023,063	1,301,160	1,811,190
Grants to UMCOR					169,533
	4,394,632		4,394,632	4,729,999	7,868,802

Programs administered by the Division:

Mission programs	4,692,279		4,692,279	4,728,627	6,535,446
Mission personnel:					
Pension & Postretirement	2,709,867		2,709,867	2,929,614	7,903,767
Brooks Howell Home Expenses	1,919,204		1,919,204	1,604,407	3,170,939
Property, repairs & maintenance	206,027		206,027	248,861	1,377,489
Service Center, CCUN & Others	2,916,579		2,916,579	3,391,272	5,419,242
Scarritt-Bennett Center - grants	20,833		20,833	50,000	68,750

Total Program Expenses 16,859,421 16,859,421 17,682,780 32,344,435

Supporting services-management & general	2,377,715		2,377,715	2,301,016	3,353,595
Fundraising	54,665		54,665	102,878	160,724

Total operating expenses 19,291,801 19,291,801 20,086,674 35,858,754

(Decrease)/Increase in net assets from operations	(5,301,717)	1,180,404	(4,121,313)	(6,010,124)	(6,574,138)
---	-------------	-----------	-------------	-------------	-------------

Nonoperating activities:

Net (depreciation) appreciation in fair value of investments	(6,035,275)	(5,262,980)	(11,298,255)	2,939,718	3,533,006
Net App/Dep in FV of Trusts held by others			5,147	-	56,549
Gain on sale of properties	5,558		5,558	62,260	2,084,245
Endowment Contribution			75	9,857	461,694

Total Nonoperating activities (6,029,717) (5,262,980) 5,222 (11,287,475) 3,011,835 6,135,494

(Decrease)/Increase in net assets for the year	(11,331,434)	(4,082,576)	5,222	(15,408,788)	(2,998,289)	(438,644)
--	--------------	-------------	-------	--------------	-------------	-----------

Intrafund transfer	(60,000)		60,000	-	-	-
--------------------	----------	--	--------	---	---	---

Total Other Changes (60,000) - 60,000 - - -

(Decrease)/Increase in net assets during the year	(11,271,434)	(4,082,576)	(54,778)	(15,408,788)	(2,998,289)	(438,644)
---	--------------	-------------	----------	--------------	-------------	-----------

Net assets - Beginning of year 29,610,511 29,825,033 15,315,967 74,751,511 75,230,951 75,190,155

Net assets - End of year \$ 18,339,077 \$ 25,742,457 \$ 15,261,189 \$ 59,342,723 \$ 72,232,662 \$ 74,751,511